



Waterstown Mayer
Public Schools

Connections • Opportunities

Waterstown- Mayer public Schools

School Board Update

March 15, 2021



CUNINGHAM
G R O U P



ANDERSON - JOHNSON ASSOCIATES, INC.

A  BOLTON & MENK COMPANY

Site Planning | Landscape Architecture | Civil Engineering

Design Progress Update

- Stadium & Athletics Improvements – Features
 - Project is out for bid
 - Artificial turf selection by March 31
 - LED stadium lighting has been ordered
 - Bleacher PO has been sent
 - (825) 18” seats
 - (10) Wheelchair spaces
 - ADA ramp on west end
 - 10’ x 48’ press box (increased by 20 SF)
 - Max allotted before elevator is acquired per code
 - Bid Opening to be moved to 4/8



Watertown Mayer
Public Schools

Connections • Opportunities



CUNNINGHAM
G R O U P

Design Progress Update

- Concessions & Ticketing
 - CGA to present CD's for approval to bid
 - Issue for Bid on 3/18 (pending approval)
 - Bid on 4/13



Watertown Mayer
Public Schools

Connections • Opportunities



CUNNINGHAM
G R O U P

Pre-Construction Update

- WMES Remodel
 - Preliminary meeting regarding summer operations to be held with district administration in the next two weeks
 - Pre-Construction meeting is tentatively scheduled for April 20
 - CGA is compiling requested renderings of completed spaces and they will be distributed throughout the building for public viewing



Watertown Mayer
Public Schools

Connections • Opportunities



CUNNINGHAM
G R O U P

Construction Update

- WMMS/HS Remodel
 - Phase 1A (MS/HS Cafeteria)
 - Floor, wall, and ceiling demo is complete
 - Concrete slab has been sawcut and removed for new underground plumbing and structural columns in new serving area
 - Mechanical ceiling rough-in is underway with electrical rough-in to follow immediately
 - Steel framing of new soffits in ceiling is underway
 - Phase 1B (HS Media Center)
 - 85 lockers were removed, and the North and West walls of the media center demolished, revealing the new open media center footprint
 - Mechanical ceiling rough-in is underway with electrical rough-in to follow immediately
 - Steel framing of new soffits to begin week of 3/15 with steel wall framing to follow immediately
 - Phase 1C (HS Sped Suite)
 - Owner moved out of space and temporary walls constructed to separate traffic flow
 - Ceiling and casework demo is underway alongside mechanical and electrical demolition



Watertown Mayer
Public Schools

Connections • Opportunities



CUNNINGHAM
G R O U P

Design & Construction Schedule

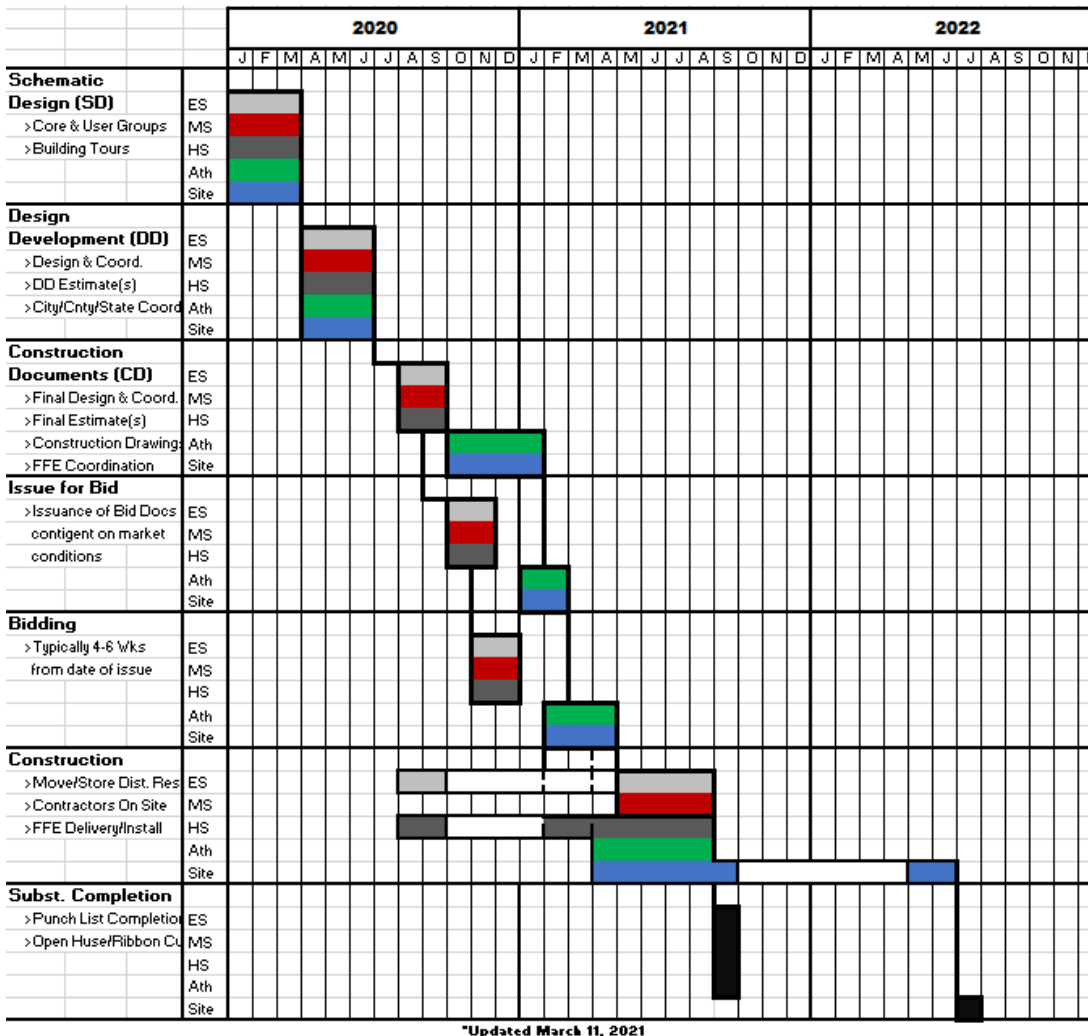


Watertown Mayer
Public Schools

Connections • Opportunities



CUNNINGHAM
GROUP



*Updated March 11, 2021

Budget Update



Watertown Mayer
Public Schools

Connections • Opportunities

Funding – All Sources	\$25,000,000		
	Budget	Cost-to-Date	Cost-to-Complete
Permits/Owner Costs	\$272,500	\$46,853	\$225,647
Fees/Services	\$3,928,000	\$2,019,204	\$1,908,796
FF&E	\$2,976,000	\$8,448	\$2,967,552
Construction	\$16,922,742	\$747,867	\$16,174,875
Contingency	\$900,758	\$-----	\$900,758
Totals	\$25,000,000	\$2,822,372	\$22,177,628



CUNNINGHAM
G R O U P

Questions



WaterTown Mayer
Public Schools

Connections • Opportunities



CUNNINGHAM
G R O U P