



Watertown Mayer
Public Schools

Connections • Opportunities

Watertown-Mayer public Schools

School Board Update

Sept 27, 2021



CUNINGHAM
G R O U P



ANDERSON - JOHNSON ASSOCIATES, INC.

A  BOLTON & MENK COMPANY

Site Planning | Landscape Architecture | Civil Engineering

Construction Update

- Material Delay Update
 - Specialized Gyptone ceiling panels – Arrived 9/20 and are installed
 - Toilet partitions – delayed due to contractor coordination issue; scheduled to arrive w/of 10.18
 - Stadium entrance gate – delayed due to coordination/production allocations/material procurement; scheduled to arrive w/of 10.4
 - Visual display boards – Arrived on 9/20 and are beginning to be installed, Elementary school arrives w/of 10.18
 - Ceramic Tile: Serving area scheduled to arrive w/of 10.25, bathroom vestibules scheduled to arrive w/of 12.15
 - Casework for school store – delayed due to contractor coordination issue; scheduled to arrive w/of 10.18
 - Butcher Block Countertops – delayed due to contractor coordination issue; scheduled to arrive 10.1
 - Gym curtains scheduled to arrive w/of 9.27



Watertown Mayer
Public Schools

Connections • Opportunities



CUNINGHAM
G R O U P

Construction Update

- WMMS/HS Remodel (**HIGH SCHOOL**)
 - **(Cafeteria/Kitchen/Serving)**
 - Kitchen equipment installed and fully operational
 - Passed MDH inspection Sept 7th, had to provide cold lunches for 1 day
 - All flooring and furniture installed throughout cafeteria (booths arrived 9.22)
 - Wood ceiling and wall panels complete
 - Punchlist items remaining
 - **(Media Center/SPED Suite/CTE)**
 - Soft furniture arrived w/of 9.20 to complete furniture install throughout media center
 - SPED suite classrooms are complete and are currently in punch list phase. Bathroom under construction
 - All furniture placed in areas labor day weekend
 - Doors/frames installed in robotics classroom
 - Punchlist items remaining



Watertown Mayer
Public Schools

Connections • Opportunities



CUNNINGHAM
G R O U P

Construction Update Cont.

- WM/HS Remodel (**MIDDLE SCHOOL**)
 - Wood wall and ceiling panel installation complete
 - Gyptone panels cleared customs and arrived onsite 9.20 – all have been installed in Royal Commons
 - Electrical fixtures installed in Royal Commons
 - Group bathrooms have been tiled out, all fixtures installed, and temp partitions are in place
 - Hallway resilient flooring installed throughout all corridors (issue with installation)
 - All lockers have been reinstalled in their proper locations
 - All classrooms, and SPED suite were filled with furniture and owner belongings over labor day weekend
 - Temp wall constructed to divide middle school classrooms from current renovations in MS office
 - Furniture for Royal Commons is currently being stored in MS gym, to be removed this week
 - Gym curtains scheduled to arrive
 - Punchlist items remaining throughout MS



Watertown Mayer
Public Schools

Connections • Opportunities



CUNNINGHAM
G R O U P



ANDERSON - JOHNSON ASSOCIATES, INC.

A M BOLTON & MENK COMPANY

Site Planning | Landscape Architecture | Civil Engineering

Construction Update Cont.

- WMES Renovation
 - Locker installation throughout all Pod Commons complete
 - Flooring in all pod commons areas and SPED suite complete
 - All furniture and teacher belongings placed throughout the school
 - SPED bathroom fixtures installed
 - Doors for SPED suite are waiting on cores. Temp doors installed throughout area until cores arrive
 - Markerboards for Innovation lab and pod commons areas to arrive w/of 10.18
 - Final punch list items remaining



Watertown Mayer
Public Schools

Connections • Opportunities



CUNNINGHAM
G R O U P



ANDERSON - JOHNSON ASSOCIATES, INC.

A  BOLTON & MENK COMPANY

Site Planning | Landscape Architecture | Civil Engineering

Construction Update Cont.

- WMHS Stadium Renovation
 - Turf installation completed
 - Final lift of asphalt installed; cure time is 30 days until athletic surfacing can be applied
 - Home and visitor bleachers installed including press box
 - Transformer from Xcel arrived 9/13 and all power to stadium is fully functional
 - Scoreboard arrived 9/14 and is functional, commissioning to be complete next week
 - Fencing installation underway
- WMHS Concessions Stand
 - Interior painting complete
 - Exterior burnished block washed and sealed
 - Coiling and hollow metal doors installed
 - Stainless steel countertops/existing equipment installed and in place
 - Exterior building signage installed
 - Roofing complete, soffit and fascia nearing completion



Non-Conforming Work

- Resilient Flooring (Forbo)
 - Technical reps brought on site to discuss issues with corridor flooring
 - After review, many issues stemmed from installation and can be remedied
 - Further investigation is needed on bubbling of design inlays
 - Night crew has established a plan for correction/reinstallation
- Carpet Tile (Kinetex)
 - Technical reps brought on site to discuss issues with classroom carpet tile throughout school
 - After review, carpet was performing as designed, majority of issues had dissipated since 9/01
 - Product was sent back to lab and was tested for manufacturing defects (test passed)
 - Additional review and monitoring throughout September and October



Site Planning | Landscape Architecture | Civil Engineering

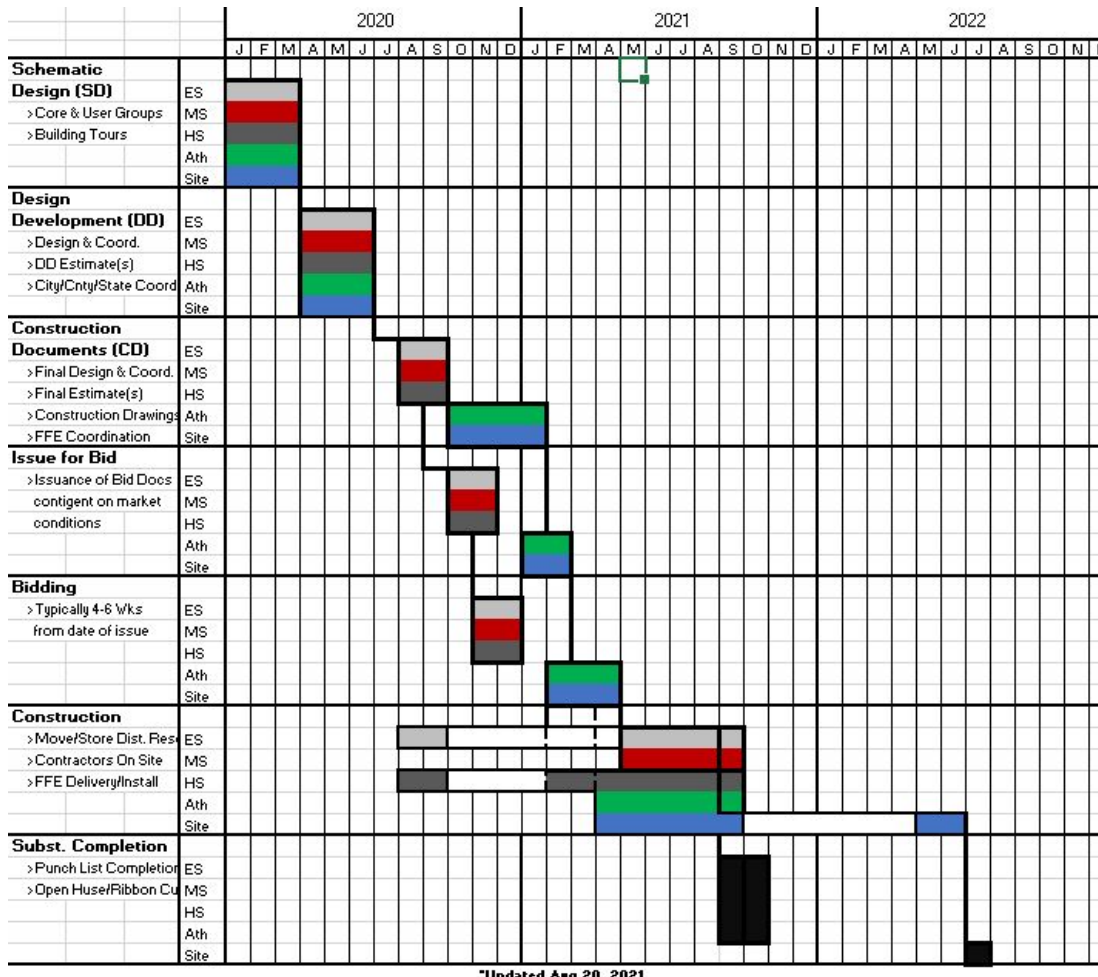
Design & Construction Schedule



CUNNINGHAM
GROUP



Site Planning | Landscape Architecture | Civil Engineering



*Updated Aug 20, 2021

Budget Update



Watertown Mayer
Public Schools
Connections · Opportunities



CUNNINGHAM
G R O U P



ANDERSON · JOHNSON ASSOCIATES, INC.
A BOLTON & MENK COMPANY

Site Planning | Landscape Architecture | Civil Engineering

Funding – All Sources	\$25,000,000		
	Budget	Cost-to-Date	Cost-to-Complete
Permits/Owner Costs	\$297,500	\$159,217	\$138,283
Fees/Services	\$3,928,000	\$2,442,389	\$1,485,611
FF&E	\$3,115,846	\$3,082,633	\$33,213
Construction	\$16,777,096	\$11,645,788	\$5,131,308
Contingency	\$881,558	\$535,986	\$345,572
Totals	\$25,000,000	\$17,866,013	\$7,133,987

Questions



Watertown Mayer
Public Schools

Connections · Opportunities



CUNINGHAM
G R O U P



ANDERSON - JOHNSON ASSOCIATES, INC.

A **BOLTON & MENK COMPANY**

Site Planning | Landscape Architecture | Civil Engineering